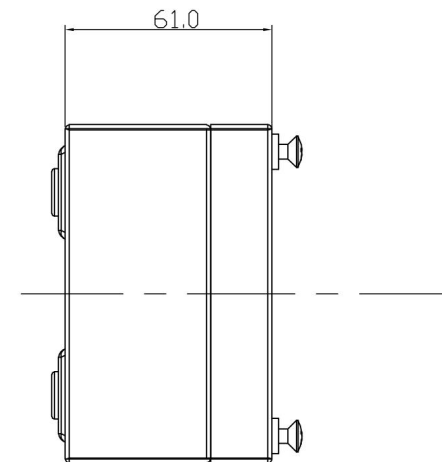
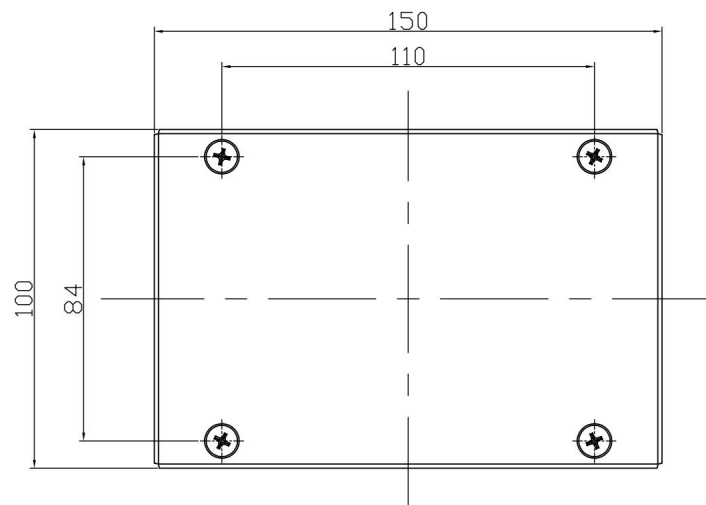
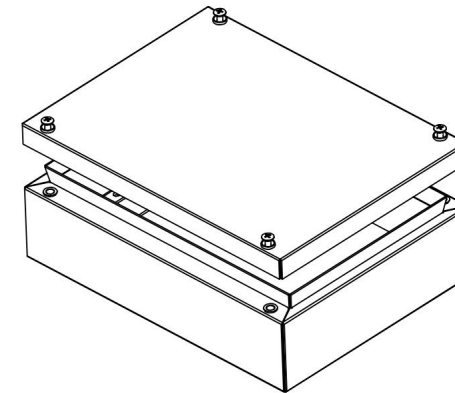
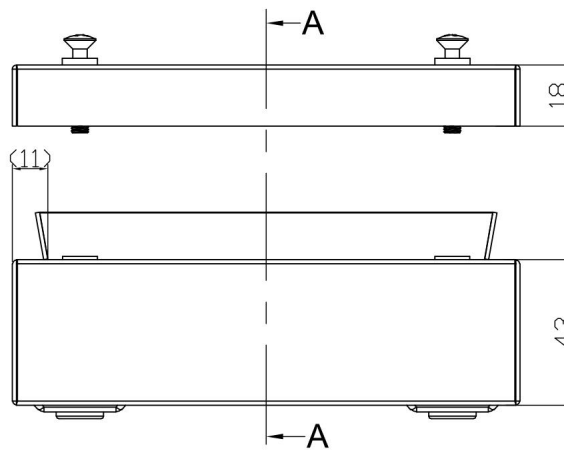

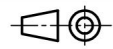


SECTION A-A



Sr.	Material	Qty.
1	Base (Assembly)	1
1.1	Base	1
1.2	Din Rail Mounting Channel	2
1.3	Blind NutSert M5 - SS A2	4
1.4	Bottom Sealing Cap	4
2	Lid (Assembly)	1
2.1	Lid	1
2.2	Gasket	1
2.3	Plastic captive Screw insert	4
2.4	Stud M6x12 A2	1
2.5	Lid Screw M5 A2 DIN 966	4

Material:- SS304 / SS316L / STEEL Finish:- SS - Grinded 240 grains (For Steel Powder coated) General Tolerances DIN ISO 2768c Linear Tol. ±1. , Angular Tol. :- Surface Finish: All Dimensions: mm	TITLE :- SS/Steel gehäuse Enclosure 150 X 100 X 61	<small>This drawing and any information or descriptive material set out on it are the confidential property of Company Name and MUST NOT BE DISCLOSED, COPIED in whole or part or used for any purpose without the written permission of Company Name.</small>
	 Industrial Solutions GmbH	CODE: DRG. NO. GBS015010061
FIRST ANGLE PROJECTION  DO NOT SCALE	Molkestraße 55-57 32257 Bünde Tel: +49 (0) 5223 / 819 60 -55 Fax: +49 (0) 5223 / 819 60 -56	REV 00
SHEET 1 OF 1		

Description	Rev.	Date