

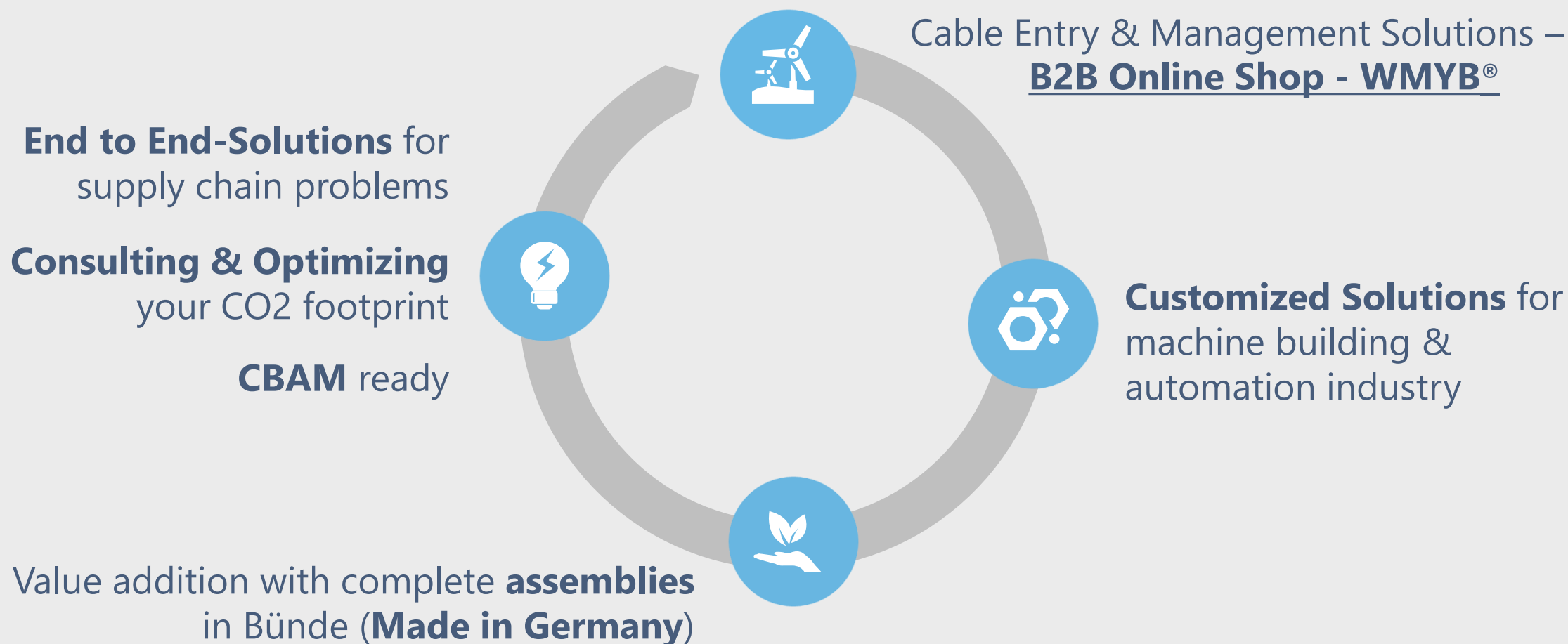


STRENGTHENING OUR FUTURE...

Cable & Electrical Management,
Customized Industrial Solutions,
Support Arm & HMI Control Panel Systems.

Our Solutions

Cable, Electrical & Customized Industrial Solutions



01

Who We Are

Cable, Electrical & Customized Industrial Solutions

Copyright ©

Who We Are / What We Do

Brand, Product & Service Diversification



Cable Management Solutions

- Enclosure Solutions
- Cable Entry Solutions
- Customized Enclosure Solutions
- Warehouse, Customization & Assembly in Germany



Industrial Customized Solutions

Production in DE, TR & IN

- Center of Excellence, CNC, VMC & EDM
- Prototyping, Casting Forging & Tooling
- Value Addition & Cost Engineering
- Support Arm Systems & HMI-Panels



Electrical Management Solutions

- Motors & Pumps
- Cables & Wires
- Switch Gears
- Privat Label Opportunities

Vision & Mission

Electrical Management & Customized Industrial Solutions

Vision

Our vision is to make life easier for all our customers. We want to be a preferred partner for electrical management and customized solutions and are really committed to their success.



Mission

Our mission is to give all our customer an extraordinary experience by being proactive & solution oriented.

Our Values

Cable, Electrical & Customized Industrial Solutions

- e**X**cellence in Industrial Solutions
- Innovative Partnerships
- **N**avigating Complex Challenges
- **D**edication to Service
- **U**nitng for Integrity
- e**X**ceptional Customer Support





02

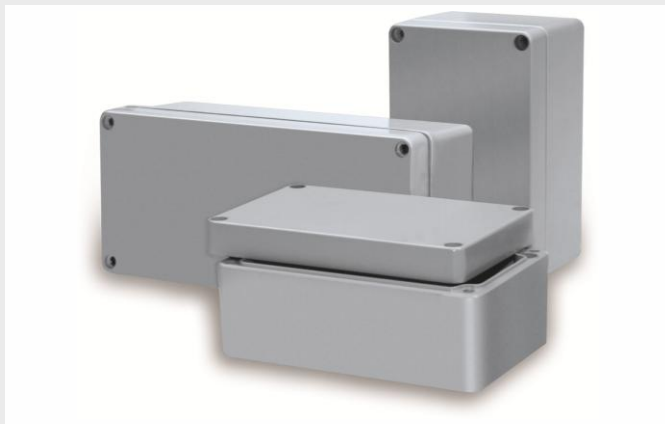
Cable Management Solutions

Visit Our New B2B Industrial Shop Solution: www.wmyb.eu

Copyright ©

Cable Entry Solutions

www.wmyb.eu - WMYB® - We Make Your Box



Enclosures

- Aluminum Die Cast (AlSi12)
- GRP Glass Fiber Polyester
- Steel
- Stainless Steel (304 / 316L)
- Industrial, EMC & ATEX Solution (Ex e, Ex I & Ex d)



Cable Glands

- Metal Cable Glands
- Polyamide Cable Glands
- Ventilation Glands
- PBE, Blind Plugs & Stoppers
- Industrial, EMC & ATEX Solutions (Ex e, Ex i & Ex d)



Conduits & Fittings

- Metal Conduits & Fittings
- Polyamide Conduits & Fittings
- Watertight & UV-Resistant Series
- TPV coated, steel wire & liquid tight series

Cable Management Solutions

www.wmyb.eu - WMYB® - We Make Your Box



Cable Ties, Bands & Buckles

- Stainless-Steel material grades offering superior reliability when it comes to high tension strapping.
- Our product comply to international norms.



Cable Terminals

- Snap on Terminals
- Various Types
- Bootless
- Customized Terminals



Cable Connectors

- Cable Lugs
- Cable Terminal
- Up to 36 kV Connectors
- Bi-Metallic
- Customized Connectors

03

Electrical Management Solutions

STRENGTHENING FUTURE...

Electrical Management Solutions

Privat Labeling Opportunities for Distributors & LSE's



Motors

- Premium Series Energy Efficient Motors
- Range: 0.55 kW – 355 kW (0.75 HP – 470 HP)
- IE2, IE3 & IE4 Motors
- ATEX Solutions Available



Switch Gears

- Industrial Switches
- Circuit Brakers
- General Purpose Switch Gears
- Magnetic Contactors
- Thermal Overload Relays



Cables & Wires

- Heavy Duty XLPE Power cables for Power Generation / Distribution
- Cables for Power Supply to Residential, Commercial & Industrial
- Fire Resistant Cables

The background of the slide is a collection of various industrial drill bits and tooling, arranged in a row and slightly overlapping. The bits are made of metal and have different designs, including standard double-flute bits and more complex multi-flute or specialized bits. The entire image is overlaid with a semi-transparent blue filter.

04 | Customized Solutions

STRENGTHENING OUR FUTURE...

Copyright ©

Customized Solutions

Customized Industrial Solutions for OEMs



Machined & Turned Parts

- Brass, div. grades
- Aluminum, div. grades
- Stainless Steel, div. grades
- Assemblies & Testings
- certifications (Pressure, vibration & IP)



Cast Parts, Fixtures & Molds

- Die Casting
- Sand Casting
- Gravity Casting
- Forging
- Mold Design & Manufacturing



Tooling for Injections & Die-Casts

- Concept
- Tool/Cast Design
- Manufacturing
- Product

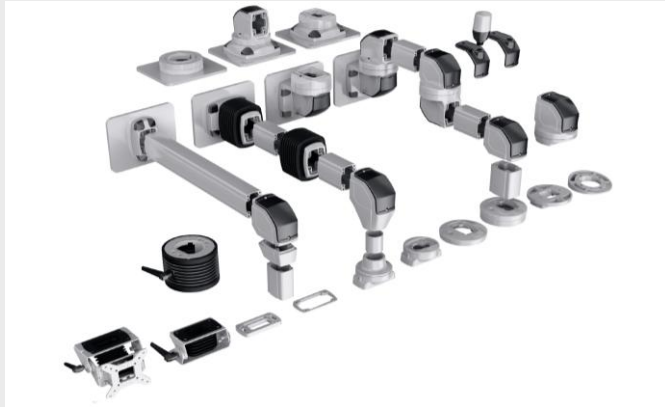
05

Support Arm & HMI Control Panel

STRENGTHENING OUR FUTURE...

Support Arm & HMI Panel Solutions

Customization & Assembly in Germany



Support Arm Systems

- XX-TA050
- XX-TA080
- XX-TA130
- Warning Lambs & Adapters



Panel / HMI Enclosures

- LM construction, anodized extruder aluminum profiles.
- Dimensions from 250x250 mm up to 600x600mm
- Customized sizes & production



Height Adjustable Support Arm

- Height adjustable arm system that allows operators in variable lengths to position heavy-duty panels & monitors up or down.
- XX-TA080 + 130 Series

06

Global Supply Chain

STRENGTHENING OUR FUTURE...

Copyright ©

Infrastructure

Customized Industrial Solutions / Machine Capabilities



Laser Cutting



Bending



Welding



Die Casting

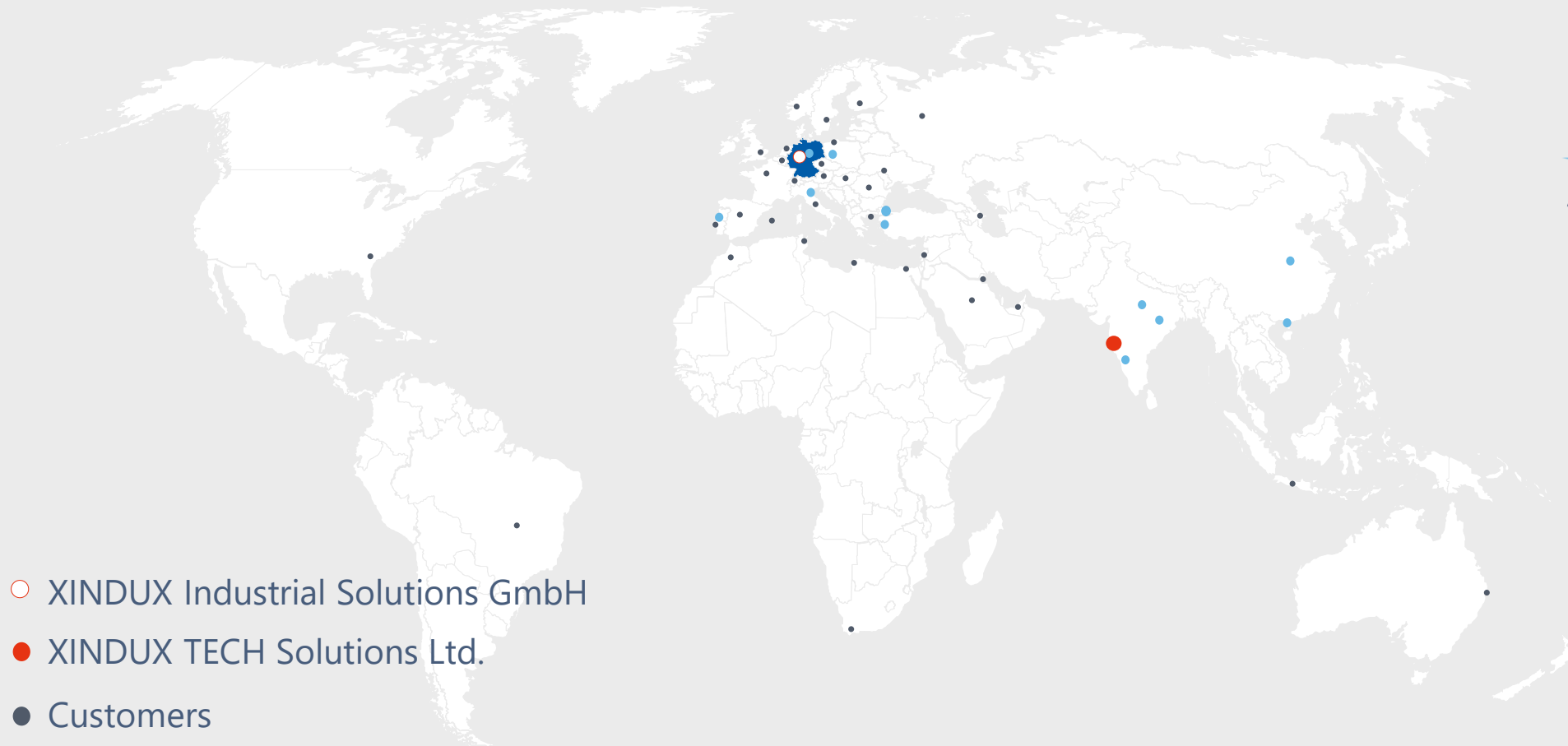


CNC / VMC



EDM

Global Supply Chain, Own Brands & Exclusive Partners



- XINDUX Industrial Solutions GmbH
- XINDUX TECH Solutions Ltd.
- Customers
- Manufacturers / Distribution Network

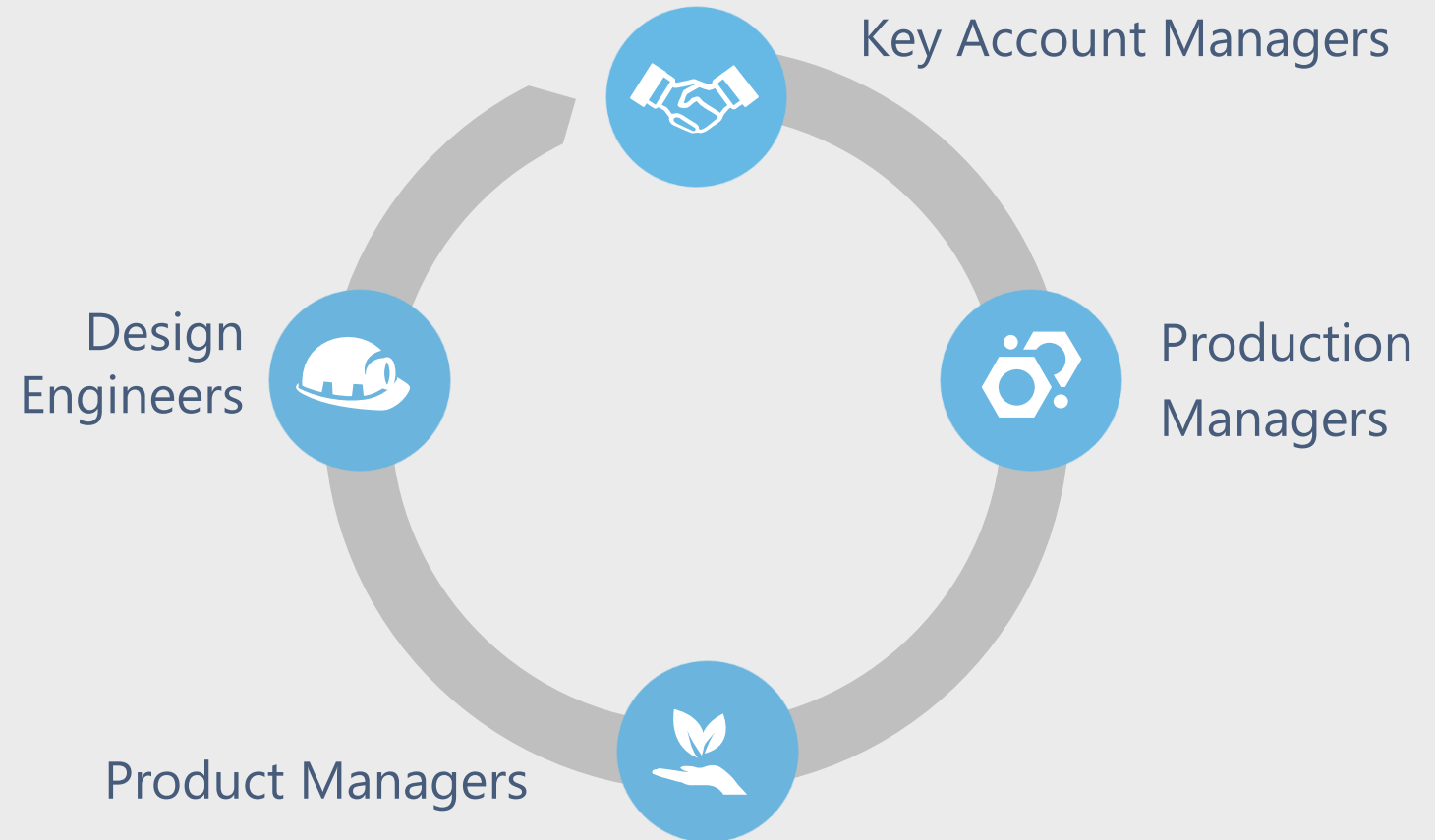


XINDUX Core-Team

Electrical Management & Customized Industrial Solutions

Our Expertise & Knowledge

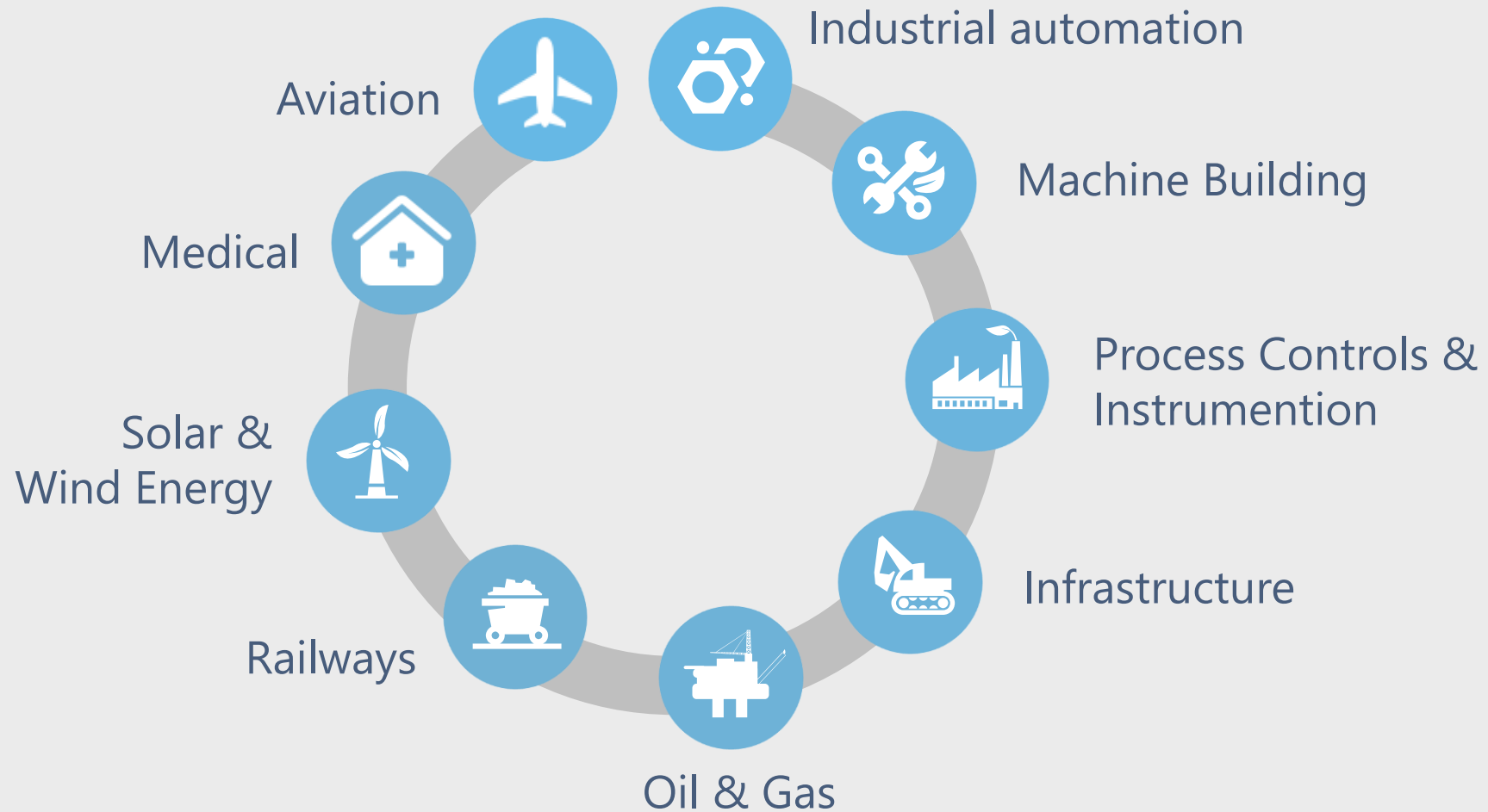
- Concept to Execution
- Process Fabrication
- Die Casting, Machining, EDM, Powder Coating & Assembly
- Customized Solutions for Automation & Machine Building
- Cable Entry & Management Solutions via WMYB®
- Support Arm & HMI Control Panel via ARMINDUX®



Industries We Serve (OEMs & Distributors)



Cable management-, tooling-, support arm- & HMI- panel solutions



Why Choose Us

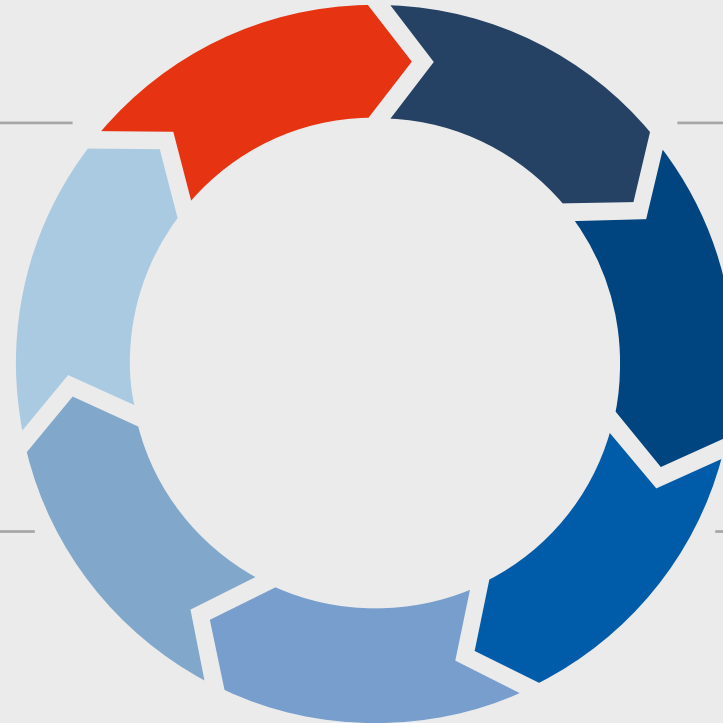
XINDUX as your preferred Partner

High Quality Products

Warehousing in Germany

Short Production Timeline and Fast Delivery Terms

Customized Size Production



Value Addition & Assembly

Before & After Sales Support

Innovative Design

Catalogues

Product Catalogues for download



Product Catalogue



Support Arm & HMI Control Panel Catalogue



Thank you for your attention

Sakir Afat
Head of Sales & Marketing

Mobil: +49 173 392 45 68
Phone: +49 5223 81 960 - 55
Fax: +49 5223 81 960 - 56
E-mail: s.afat@xindux.com



www.xindux.com

XINDUX Industrial Solutions GmbH

Moltkestrasse 55 - 57
32257 Bünde, Deutschland

Phone: +49 5223 81 960 - 55
Fax: +49 5223 81 960 - 56

E-mail: sales@xindux.com
Web: www.xindux.com

B2B Web-Shop: www.wmyb.eu